



Charles and Ray Eames

a legacy of innovation

Molly Mask
Intro to Interior Design
Fall 2008



MEET CHARLES AND RAY EAMES



Charles and Ray Eames

- Charles studied architecture at Washington University
- Later attended Cranbrook Academy of Art as a student and eventually became head of the industrial design department
- Met wife Ray Kaiser at Cranbrook, who was an art student
- Married in 1941 and moved to Los Angeles, California



Charles Eames



Ray Eames



Book Cover



Working Together

WHAT ARE THEY FAMOUS FOR



Eames Lounge Chair LCW

- Notorious for the Eames Lounge Chair that is still seen today
- Changed the way furniture was designed and produced
- "The Eames House" which was designed and built by the couple in 1949
- Produced short films, *Powers of Ten* (1977), and others which motivated experimentation and education



Eames House, California



Storage Unit



Eames Lounge Chair



Eames Lounge Chair

ELEMENT OF DESIGN: COLOR

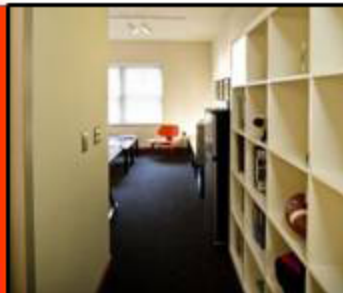


Eames Wire Chairs

- Furniture was meant to stand out in a room
- Used bright and bold colors to make a statement
- Gearing towards the modern style with minimal pieces in a room and one strong piece to draw attention
- Purposefully made the furniture unique to the space they were in



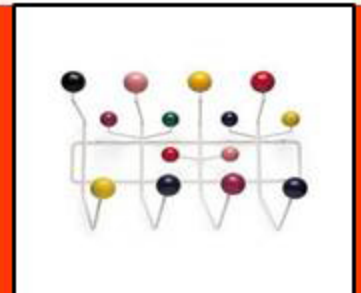
Bring Green Eames Sofa



Orange Eames Chair



Blue & Orange Plywood



Colorful 'Hang-It-All'

ELEMENT OF DESIGN: TEXTURE



Molded Plywood Chair

- Used molded plywood as a low-cost, high-efficient material
- Texture would come out to be smooth and polished
- Also used wire mesh as chair materials
- Creates a rough, edgy texture—opposite of the molded plywood chairs



Molded Plywood Chair



Wire Chair



Stack of Eames Chairs



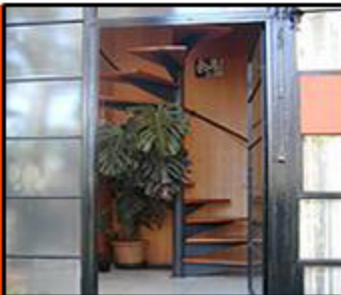
Wire Chair

PRINCIPLE OF DESIGN: RHYTHM



Exterior of Eames House, California

- Eames House– 1949, Los Angeles, California
- Designed and built by the couple
- Repetition is apparent throughout the house in various areas
- 2 boxes separated by courtyard, double height spaces at each end to create a rhythm



Spiral Staircase



Living Room



Eames Living Area



Exterior while building

PRINCIPLE OF DESIGN: PROPORTION



Powers of Ten Short Film

- *Powers of Ten* – short film or “Eames Essays”
- “stretches the limits of our ability to comprehend the enormity of the universe and the complexity of subatomic physics”
- Brings into scale of how we view our surroundings
- Used to teach how things are in proportion to the world



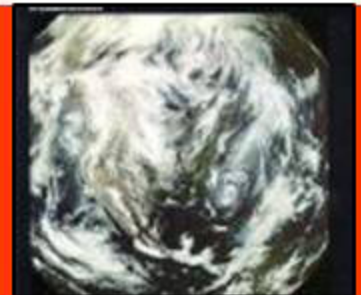
First Shot, 10^1



10^2



10^3



10^{10}

PHILOSOPHY AS DESIGNERS



Charles and Ray

- “Recognizing the need is the primary condition for design”
- Wanted to create furniture that was affordable and efficient for every day
- Expanded the way people thought about how ordinary ideas can be used and applied
- “Ordinary to extraordinary” to everyday pieces of furniture



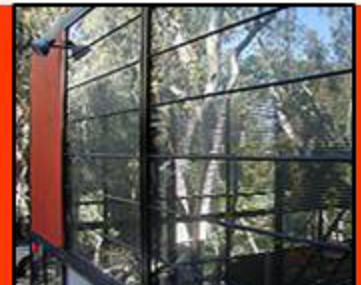
Modern, Efficient Chairs



Eames Leg Splint



Elephant Childs Toy



Eames House